



Clifton Connection

Friday 6th June 2025

Humber Education Trust

Website: <https://cliftonprimaryschool.co.uk> • Tel: 01482 325913 • Email: admin@clifton.het.academy

Key Dates

26/06/25 - SEND Coffee morning (invitation only)

01/07/25 - Sports Day (FS, KS1)

03/07/25 - Sports Day (KS2)

08/07/25 - Transition Day

16/07/25 - Summer Fayre

18/07/25 - School Closes

03/09/25 - School reopens

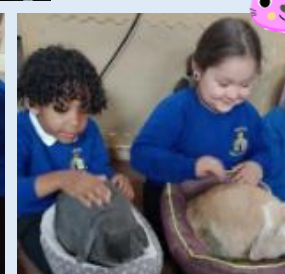


Summer Fayre

We are holding our annual summer fayre on **Wednesday 16th July**. We have a bouncy castle, face painting, a bottle stall, hook a duck and lots more!

Lion Learners Visit to FS

This week FS had a visit from Lion Learners, the children learnt about the animals and got to hold some of them!



Writing Workshops

After the half term, we are holding workshops with a focus on writing so that you can see how we teach writing skills at Clifton. There will be a short talk in the school hall followed by visits to lessons to see them in action. The dates are as follows-

17/06/2025 - 9am for FS2, Y1 and Y2.
19/06/2025 - 9am for Y3, Y4, Y5 and Y6.

We look forward to seeing you there!



Parent Craft Workshops

We are holding craft workshops the week beginning 9th June. This an opportunity to come and craft with your child. The dates and times are as follows:

10/06/25 at 2pm- Year 3
11/06/25 at 9am- FS2 + Y6
11/06/25 at 2pm- Year 1
12/06/25 at 9am- Year 5
12/06/25 at 2pm- Year 2
13/06/25 at 2pm- Year 4

The workshops will last 45 mins/ 1 hour. We look forward to seeing you there!



Training Day 09/06/2025

Don't forget the school is closed for a training day on **Monday 9th June!** We are back open on Tuesday 10th June for all children.

Superstars of the week

RLB	Isabelle
REG	Dusty
1RW	Logan
1CM	Lara
2AM	Seleti
2CW	Sienna
3RH	Harry
3PM	Ritvan
4KH	Muhammad Ali
4CS	Melissa
5JM	Misha
5JG	Oliver
6CT	Majid
6SF	Brody

Weekly Attendance

RLB	90.95%	REG	84.76%
1RW	94.62%	1CM	88.85%
2CW	87.62%	2AM	88.75%
3RH	91.67%	3PM	82.2%
4KH	92.5%	4CS	86.67%
5JG	87.31%	5JM	87.31%
6SF	100%	6CT	98%

WINNERS
1RW
&
6SF



Monday	Tuesday	Wednesday	Thursday	Friday
Training Day (School Closed)	Minced Beef Loaded Wedges	Sausage & Mash	Chicken Korma	Fish Fingers
	Veg Sausage	Pea-ter Croquette	Cheese & Tomato Pasta	Cheese Whirl
	Jacket Potatoes	Jacket Potatoes	Jacket Potatoes	Jacket Potatoes
	Sandwiches	Sandwiches	Sandwiches	Sandwiches